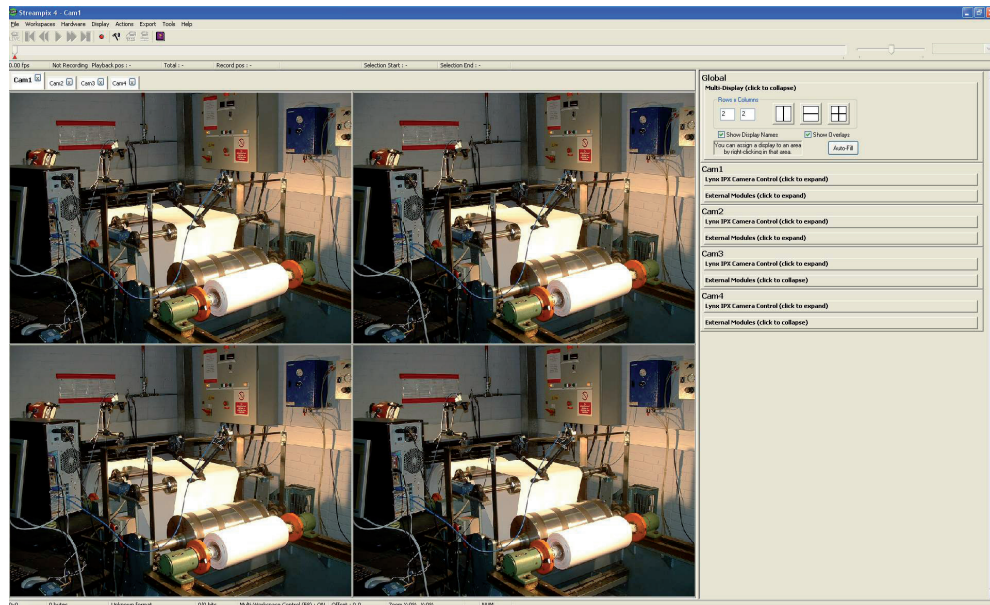


Multi camera troubleshooting system

StreamPix 4 with PrePost module.

- Troubleshoot your production line or analyze hard to see events from multiple angles
- Pinpoint the root cause of production line failures
- Operator friendly GUI and tools
- Lower down time and increased productivity.



For troubleshooting applications requiring multiple cameras. Monitor a single target from various angles. StreamPix4 is compatible with multiple cameras at various speeds and resolutions.

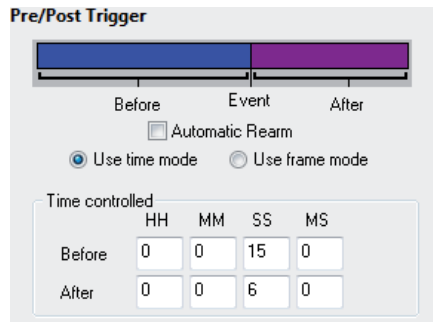
- 4 or 8 cameras per computer,
- Solutions available from 90 to 1000 frames per second,
- Resolution from 640x480 up to 4kx4k,
- Compatible with GigE, Firewire A or B, USB, Analog or CameraLink cameras from all major camera manufacturers.

Multi camera troubleshooting system

StreamPix 4 with PrePost module.

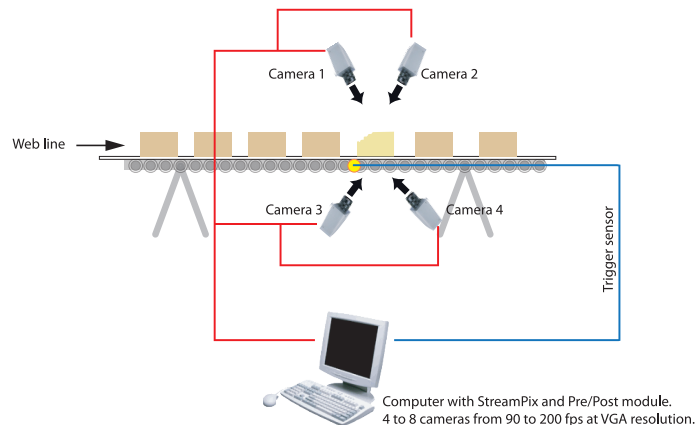
PrePost module: Set each camera individually.

Pre/Post Trigger



Automatic Rearm
 Use time mode Use frame mode

Time controlled				
	HH	MM	SS	MS
Before	0	0	15	0
After	0	0	6	0



- Prepost module captures a sequence around a Trigger event,
- Sequences can be captured from multiple cameras simultaneously,
- Length of each sequence customizable either by time or number of images,
- Re-arm feature resets the software for arrival of the next trigger event,
- Compatible with various trigger modes.

Multi camera troubleshooting system

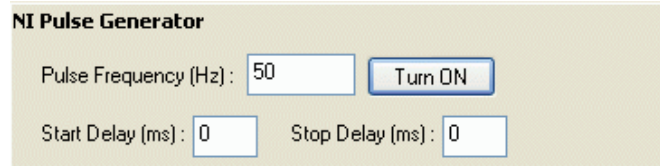
StreamPix 4 with PrePost module.

Hardware Triggering with StreamPix

Module available to control the National Instruments Ni6601 digital timing generator directly from StreamPix. Generates external pulse to sync one or multiple cameras simultaneously.

Allows :

- Accurate synchronisation of exposure for all cameras,
- Same exact number of captured frames for each cameras.



The screenshot shows a software interface titled "NI Pulse Generator". It contains three input fields and one button. The first field is "Pulse Frequency (Hz)" with the value "50". To its right is a "Turn ON" button. Below this, there are two more fields: "Start Delay (ms)" with the value "0" and "Stop Delay (ms)" with the value "0".

Computer trigger

Computer trigger mode gives you the opportunity to control the start or stop of recording using an input line directly connected to the computer. Currently, this option supports:

- Devasys USB I2C/IO module,
- Measurement Computing USB-1024LS,
- Measurement Computing SwitchAndSense 8/8,
- All National Instruments devices that include a DIO port (like NI6601 etc.).

Multi camera troubleshooting system

StreamPix 4 with PrePost module.

Portable or desktop solutions available.



- 2 cameras at 200 fps x 640 x 480
- 4 cameras at 100 fps x 640 x 480



- 1 camera at 1000 fps x 640 x 480
- 1 camera at 500 fps x 1280 x 1024
- 4 cameras at 200 fps x 640 x 480



- 1 cameras at 200 fps x 640 x 480
- 2 cameras at 90 fps x 640 x 480
- 4 cameras at 80 fps x 640 x 480

NorPix, Inc.
1751, Richardson, suite 6117
Montreal, Canada, H3K 1G6
Sales : 514-907-1588
Tech support : 514-846-0009 ex : 27
sales@norpix.com
www.norpix.com