

CHEETAH

RUGGEDIZED CAMERA SERIES

SFP-C6440

CMOS 31 MP

10 GigE Vision® over fiber



PRELIMINARY

Imperx: C6440

The SFP-C6440 camera features the Sony Pregius IMX342 Global Shutter CMOS sensor with a native resolution of 6464 x 4852 in an APS-C optical format. The Gen<I>Cam™ compliant camera delivers up to 32 frames per second in global shutter mode using the 10 GigE Vision® interface via SFP+ transceiver. The camera can be used with either copper or optical cable for extreme distances. The Sony Pregius image sensor delivers outstanding sensitivity and excellent image quality. Imperx puts you in control by providing full access to raw data without corrections. Using the simple intuitive graphical user interface, you can quickly apply image corrections, if desired. The C6440's flexibility, image quality, and speed make it suitable for a broad range of diverse and demanding applications, but "one size doesn't fit all," and Imperx can help optimize the camera to your exact requirements.

Specifications

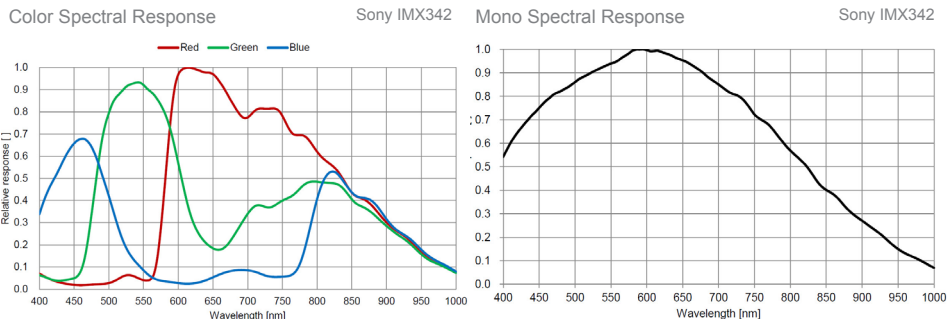
Feature	Description	Feature	Description
Output Interface	10 GigE Vision® over fiber	Strobe Output	2 strobes, programmable position and duration
Resolution	6464 (H) x 4852 (V)	Pulse Generator	Yes, programmable
Sensor	Sony Pregius IMX342 CMOS Color/Mono	Data Correction	4 LUTs pre-programmed with Gamma 0.45; Bad pixel correction (static, dynamic), Flat field correction
Sensor Format	22.3 mm (H) x 16.7 mm (V), 27.9 diagonal, APS-C optical format	Lens Mount	F-Mount (default)
Pixel Size	3.45 microns square	Canon EF-Mount	Optional, Active or Passive
Shutter	Global shutter (GS)	Supply Voltage Range	12 VDC (5 V – 30 V), 1.5 A inrush
Sensor Digitization	8, 10, 12-bit	Camera Current	Typical: 320 mA/12 V (EST)
Frame Rate	32 fps (8-bit), 16 fps (10-bit/12-bit unpacked), 21 fps (10-bit/12-bit packed)	Power Consumption	Typical: 3.8 W (EST)
Dynamic Range	71 dB	Size - Width/Height/Length	60 mm (W) x 60 mm (H) x 59.5 mm (L) (EST)
Output Bit Depth	8, 10, 12-bit	Weight	TBD
Analog/Digital Gain	Manual, Auto; 0 dB – 48 dB, 480 steps	Vibration, Shock	20G (20 – 200 Hz XYZ) /100G
Digital Gain	1x (0 dB) to 4x (12 dB) with a precision of 0.001x	Environmental	-30 °C to +75 °C Operating, -40 °C to +85 °C Storage
AEC/AGC	Yes	Humidity	10% to 90% non-condensing
Black Level Offset	Manual (0 – 255), Auto	MTBF	TBD
White Balance	Manual, Auto, Once, Off	Military Standard	MIL-STD-810G
Shutter Speed	1 µs/step, 30 µs to 16.0 s	Regulatory	FCC Part 15 Class A, CE, RoHS
Exposure Control	Off, Internal, External, Auto		
Regions of Interest (ROI)	2 ROI		
Binning	1 x 2, 2 x 1, 2 x 2		
Sub-sampling	1 x 2, 2 x 1, 2 x 2		
Trigger Inputs	External, Pulse generator, Software		
Trigger Options	Edge, Pulse width, Trigger filter, Trigger delay, Debounce		
Trigger Modes	Free run, Standard, Fast		
External Inputs/Outputs	2 IN (OPTO, LVTTTL) / 2 OUT (OPTO, TTL)		

Imperx: C6440 Applications

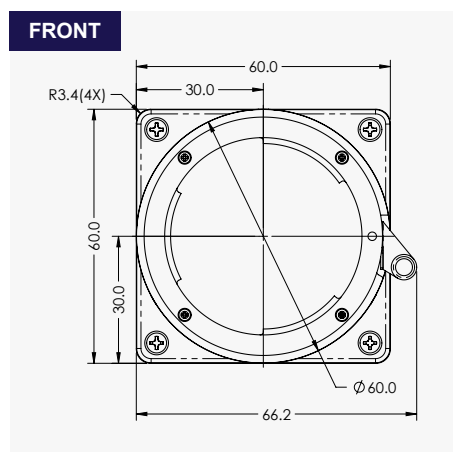
The SFP-C6440 incorporates a number of unique features tailored to reduce system complexity, maximize interface bandwidth, and expand the usable operational range.

Aerospace • Satellites • Surveillance • Ball Grid Array • Printed Circuit Board Inspection • Motion Analysis • Broadcast Television • Telepresence • Unmanned Aerial Vehicles • Machine Vision • Intelligent Traffic Systems • Aerial Imaging • Open Road Tolling Systems • Situational Awareness

Absolute Quantum Efficiency



Dimensions



Ordering Information

Output Interface

10 GigE Vision® over fiber (SFP)

Sensor Types available

Monochrome
Bayer Color

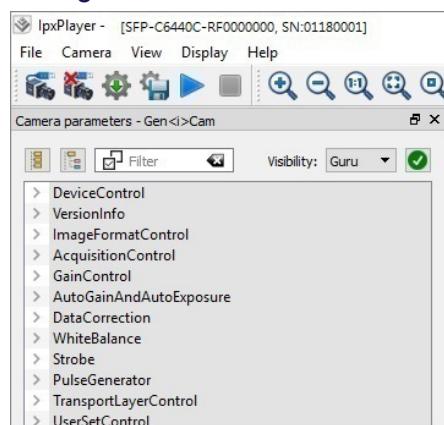
Lens Mounts

F Mount (Default)
M42 (Optional)
Canon EF Mount (Optional)

Accessories (Sold separately)

PS12V04A-Power Supply w/ 1 input and 1 output

Gen<I>Cam Compliant Camera Configurator



Hirose Connectors

Power and I/O Interface

1. 12 VDC Return	7. OUT1 (TTL)
2. +12 VDC	8. IN1 (OPTO)
3. Reserved	9. IN2 (LVTTTL)
4. Reserved	10. IN1 RTN
5. OUT2 RTN (OPTO)	11. IN2 RTN
6. OUT1 RTN	12. OUT2 (OPTO)

Connector: Hirose HR 10A-10R-12PB(71)

Rev: sfp_c6440_r2_2019

Quality Management System ISO 9001:2015 Registered
Environmental Management System ISO 14001:2015 Registered
DDTC Registered (Directorate of Defense Trade Controls, US Department of State)

IMPERX
Industrial Cameras & Imaging Systems

IMPERX 6421 Congress Ave., Boca Raton, FL 33487, USA
Tel: +1-561-989-0006. Email: sales@imperx.com

WWW.IMPERX.COM

Technical data has been fully checked, but accuracy of printed matter is not guaranteed. Subject to change without notice. Copyright 2019.