

CHEETAH

RUGGEDIZED CAMERA SERIES

C4080 CMOS 12 MP USB3



Imperx: C4080

The C4080 incorporates the On Semiconductor KAC-12040 CMOS image sensor with a native resolution of 4000 x 3000 in a 4/3" optical format. The GenICam™ compliant USB3 camera delivers up to 29 frames per second in either global or rolling shutter mode with a USB3 interface. Extended dynamic range technology coupled with extremely robust blooming suppression produce clean imagery in even the most severe uncontrolled lighting applications. Additionally, Cheetah cameras incorporate "smart" wide dynamic range technology that monitors each pixel's exposure and sets the exposure to one of four user selectable values based on the intensity of the source at the pixel. The camera also provides two acquisition frames for seamless switching between frames independently. CMOS technology eliminates smear columns from areas of ultra-bright intensity and specular reflections in uncontrolled lighting applications.

Specifications

Feature	Description	Feature	Description
Output Interface	USB3	Strobe Output	2 strobes, programmable position and duration
Resolution	4000 x 3000	Pulse Generator	Yes, programmable
Sensor	KAC-12040, CMOS Color/Mono	Data Correction	Vertical/Horizontal flip. Two 12-bit LUTs pre-programmed with Gamma 0.45 Defective/hot pixel correction (static, dynamic)
Sensor Format	18.8 mm (H) x 14.1 mm (V) 23.5 mm diagonal 4/3" optical format	Lens Mount	F-Mount (default), C, M42, EF Canon (passive or active)
Pixel Size	4.7 microns square	Supply Voltage Range	12 V DC (5 V – 33 V), 1.5 A inrush without enabled Canon controller 12 V DC (6.5 V – 33 V), 1.5A inrush with enabled Canon controller
NIR Sensitivity	850 nm: 15%, 950 nm: 5%	Camera Current	Typical: 0.32 A, Maximum: 0.35 A
Shutter	Global shutter (GS), rolling shutter (RS)	Size - Width/Height/Length	72.0 mm (W) x 72.0 mm (H) x 34.4 mm (L)
Sensor Digitization	10-bit or 12-bit	Weight	370 g
Frame Rate	29 fps (8-bit), 23 fps (10-bit), 19 fps (12-bit)	Vibration, Shock	Complies with IEC60068-2-64 and IEC60068-2-27
Dynamic Range	73 dB (RS), 56 dB (GS)	Environmental	-40 °C to +85 °C Operating -50 °C to +90 °C Storage
Output Bit Depth	8, 10, 12-bit	Humidity	10% to 90% non-condensing
Analog Gain Control	12-bit: 0-12 dB (16 steps); 8 or 10-bit: 0-18 dB (32 steps)	MTBF	>323,000 hours @ 40°C (Telcordia SR-332)
Digital Gain	24 dB (128 steps)	Military Standard	MIL-STD-810G
Black Level Offset	Manual, 0 to 2048, 1/step	Regulatory	FCC Part 15 Class A, CE, RoHs
White Balance	Manual, Auto, Off		
Shutter Speed	1 µs/step, 5 µs to 1.0 s (GS), 2 µs to 1.0 s (RS)		
Exposure Control	Off, Internal, External		
Regions of Interest (ROI)	1 ROI		
Averaging Decimation	4:1, 9:1 (both color and monochrome)		
Sub-sampling Decimation	N pixels: 2, 4, 6...30 by every M pixels: 2, 4, 6...32		
Trigger Inputs	External, Pulse generator, Software		
Trigger Options	Edge, Debounce		
Trigger Modes	Internal, External, Computer		
Wide Dynamic Range	100 dB (typ.) GS, up to 3 knee points, piece-wise linear		
External Inputs/Outputs	2 IN (OPTO, LVTTTL) / 2 OUT (OPTO, TTL)		

Imperx: C4080 Applications

The U3V-C4080 incorporates a number of unique features tailored to reduce system complexity, maximize interface bandwidth, and expand the usable operational range.

Aerospace • Satellites • Surveillance • Military and Non-Military Ground Vehicles • Ball Grid Array • Printed Circuit Board Inspection • Motion Analysis • Broadcast Television • Telepresence • Unmanned Aerial Vehicles • Machine Vision • Reconnaissance • Intelligent Traffic Systems • Aerial Imaging • Open Road Tolling Systems • Situational Awareness

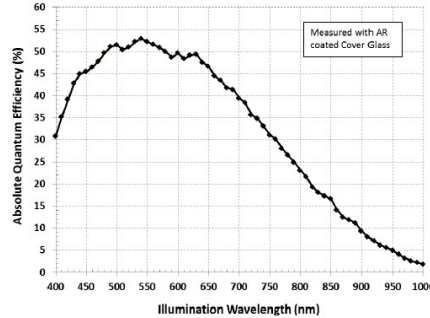
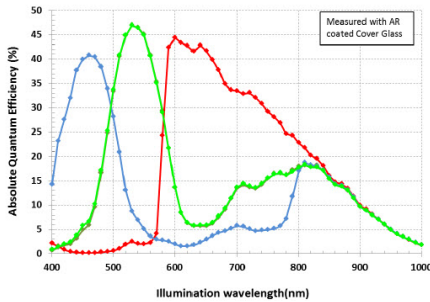
Absolute Quantum Efficiency

Color Spectral Response

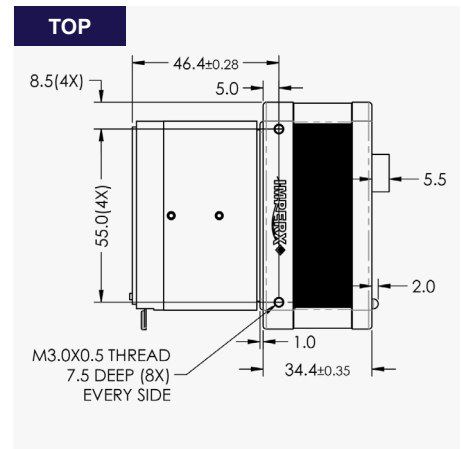
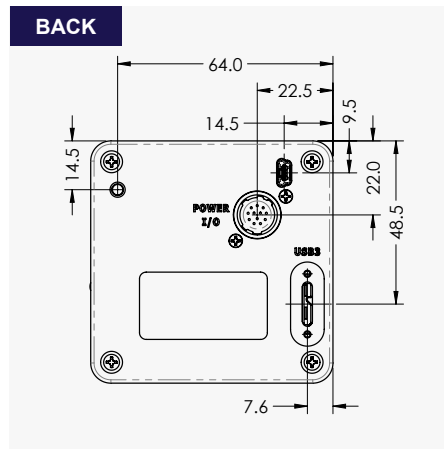
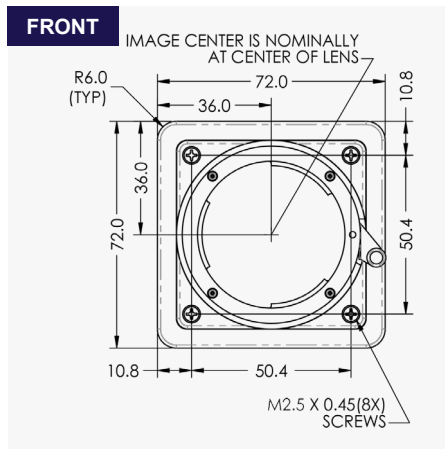
KAC-12040

Mono Spectral Response

KAC-12040



Dimensions

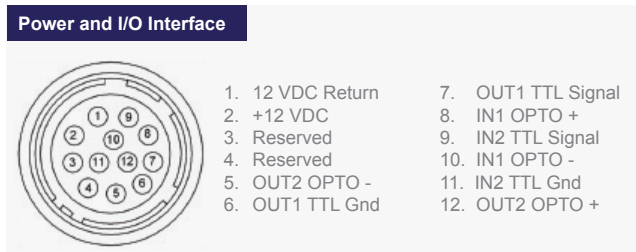


Ordering Information

Output Interface
USB3 (U3V)
Sensor Types available
Monochrome
Bayer Color

Lens Mounts
F-Mount (Default)
C-Mount
M42
EF Canon
Accessories (Sold separately)
PS12V04A-Power Supply w/ 1 input and 1 output

Hirose Connectors

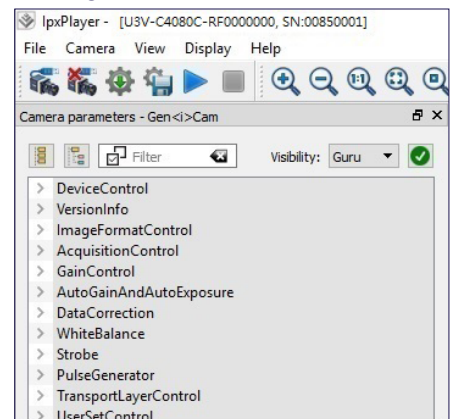


Connector: Hirose HR10A-10R-12PB(71)

Rev: u3v_c4080_r1_2019

Quality Management System ISO 9001:2015 Registered
 Environmental Management System ISO 14001:2015 Registered
 DDTC Registered (Directorate of Defense Trade Controls, US Department of State)

Gen<I>Cam Compliant Camera Configurator



Industrial Cameras & Imaging Systems

IMPERX 6421 Congress Ave., Boca Raton, FL 33487, USA
 Tel: +1-561-989-0006. Email: sales@imperx.com

WWW.IMPERX.COM



Technical data has been fully checked, but accuracy of printed matter is not guaranteed. Subject to change without notice. Copyright 2019